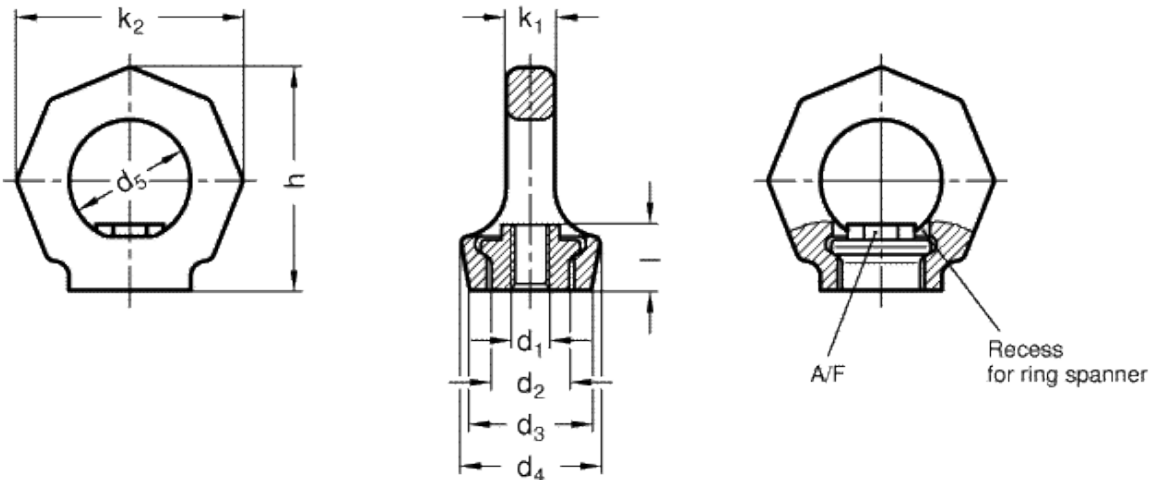


GN 583

Lifting eye nuts (rotating)



technical informations

Body

High-tensile forged tempered steel with pink plastic surface coating, 100% electro-magnetic tensile tested to EN 1677.

Nut

Steel, class 10.9 (tensile strength 1000 N/mm²).

Features

Lifting eye nuts GN 583 are mounted in rotating bearings, allowing the direction of the force action to be adjusted and preventing inadvertent loosening or overturning (as potentially possible in lifting eye nuts DIN 582).

Lifting eye nuts GN 583 offer a high load carrying capacity and they are tested to meet safety standards (safety factor 4).

The rated load carrying capacity listed in the above table is clearly marked on the ring. It applies to the most unfavourable load application of the load types listed opposite.

Lifting eye nuts GN 583 comply with Mechanical Engineering Directive 2006 / 42 / EG and are BG tested.

The hexagon socket nut cannot be removed from the ring.

Application and assembly information

The loads given in brackets refer to the load capacity of the corresponding lifting eye nut DIN 582. If such a value is not indicated the use of the lifting eye nuts DIN 582 is not permitted!

The bolt-on surface for the lifting eye nuts GN 583 must be plane and at a right angle to the threaded borehole.

Before applying the load, turn the lifting eye nut in the direction of the force. The lifting eye nut is not suitable for frequent rotation cycles under load.

The specified load values apply only in connection with threaded bolts of steel grade > 10.9 if the bolt is turned in over its entire length l. These load values also apply only for a minimum screw-in length of 1.5 × nominal thread diameter in steel with a minimum tensile strength of 37 kp/mm², at an ambient temperature of – 40 °C to + 100 °C.

Load-bearing capacity under different conditions upon request.

Operating instructions with more details and specifications are included with every delivery.

Method of mounting										
Number of mounting points	1	1	2	2	2	2	2	3 and 4	3 and 4	3 and 4
Angles of inclination	0°	90°	0°	90°	0 to 45°	45 to 60°	asymm.	0 to 45°	45 to 60°	asymm.
Factor	1	1	2	2	1,4	1	1	2,1	1,5	1
M 8	1,00 [0,14]	0,30 t	2,00 [0,28]	0,60 t	0,42 [0,10]	0,30 t	0,30 t	0,63 t	0,45 t	0,30 t
M 10	1,00 [0,23]	0,40 t	2,00 [0,46]	0,80 t	0,56 [0,17]	0,40 t	0,40 t	0,84 t	0,60 t	0,40 t
M 12	2,00 [0,34]	0,75 t	4,00 [0,68]	1,50 t	1,00 [0,24]	0,75 t	0,75 t	1,60 t	1,12 t	0,75 t
M 16	4,00 [0,70]	1,50 t	8,00 [1,40]	3,00 t	2,10 [0,50]	1,50 t	1,50 t	3,15 t	2,25 t	1,50 t
M 20	6,00 [1,20]	2,30 t	12,00 [2,40]	4,60 t	3,22 [0,86]	2,30 t	2,30 t	4,83 t	3,45 t	2,30 t
M 24	8,00 [1,80]	3,20 t	16,00 [3,60]	6,40 t	4,48 [1,29]	3,20 t	3,20 t	6,70 t	4,80 t	3,20 t
M 30	12,00 [3,20]	4,50 t	24,00 [6,40]	9,00 t	6,30 [2,30]	4,50 t	4,50 t	9,40 t	6,70 t	4,50 t

Safety instructions

The loads given in brackets refer to the load capacity of the corresponding lifting eye nut DIN 582. If such a value is not indicated the use of the lifting eye nuts DIN 582 is not permitted!

The bolt-on surface for the lifting eye nuts GN 583 must be plane and at a right angle to the threaded borehole. Screwed in, the collar of the nut must make firm contact (do not use washers) and the eye nut must rotate freely by 360°.

Before applying the load, turn the lifting eye nut in the direction of the force. The lifting eye nut is not suitable for frequent rotation cycles under load.

The specified load values apply only in connection with threaded bolts of steel grade > 10.9 if the bolt is turned in over its entire length l. These load values also apply only for a minimum screw-in length of 1.5 × nominal thread diameter in steel with a minimum tensile strength of 37 kp/mm², at an ambient temperature of – 40 °C to + 100 °C.

Load-bearing capacity under different conditions upon request.

Operating instructions with more details and specifications are included with every delivery.

Standard Elements	Main dimensions											Nominal load	Weight
	Description	d ₁	d ₂	d ₃	d ₄	d ₅	h	k ₁	k ₂	l	A/F		g
GN 583-M8	M8	16	25	28	25	45	11	47	14	12	0.3 t (3 kN)	101	
GN 583-M10	M10	16	25	28	25	45	11	47	14	12	0.4 t (4 kN)	110	
GN 583-M12	M12	20	30	34	30	55	13	56	17	14	0.75 t (7.5 kN)	160	
GN 583-M16	M16	22	35.5	40	35	66	15	65	21	19	1.5 t (15 kN)	300	
GN 583-M20	M20	29	40	50	40	74	17	75	23	24	2.3 t (23 kN)	420	
GN 583-M24	M24	35	50	60	48	90	21	90	29	30	3.2 t (32 kN)	770	
GN 583-M30	M30	44	60	75	60	112	26	112	34	36	4.5 t (45 kN)	1480	

